



Farm Road, Rainham, RM13

BUTLER  STAG



Brand new detached four double bedroom house in Rainham.



- Brand New House
- Modern Throughout
- Private Garden
- Four Double Bedrooms
- Off Street Parking
- Detached

A detached house, featuring four double bedrooms located in the heart of Rainham

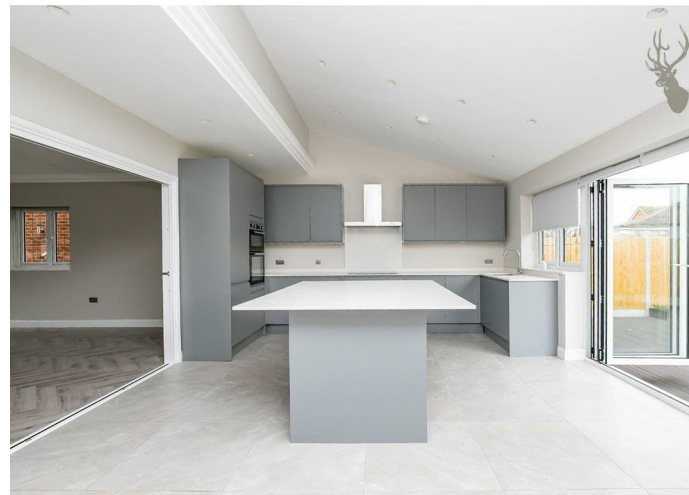
This wonderful modern property offers well-proportioned accommodation arranged over two floors including a spacious reception room, study/playroom, fully fitted kitchen/living room and a downstairs W/C.

The first floor provides four double bedrooms, main bedroom with en-suite shower room and a further fully tiled family bathroom.

A particular fine feature is the rear garden which is predominantly lawn with a decked terrace. There is also ample off-street parking to the front for multiple vehicles.

Farm Road is close to all local amenities, the A12 and M25.

Available End of July and Unfurnished





Farm Road, RM13

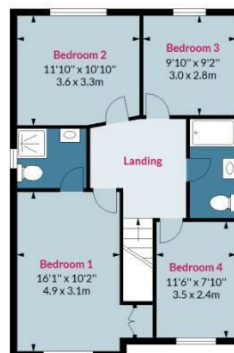
Approx. Gross Internal Area 1701 Sq Ft - 158.02 Sq M

BUTLER & STAG



Ground Floor

Floor Area 999 Sq Ft - 92.81 Sq M



First Floor

Floor Area 702 Sq Ft - 65.22 Sq M

Floor plan is for illustrative purposes only and is not to scale. Every attempt has been made to ensure the accuracy of the floor plan shown, however all measurements, fixtures, fittings and data shown are an approximate interpretation for illustrative purposes only.
lpaplus.com



BUTLER & STAG

☎ 01992 667666

🏠 4 Forest Drive, Theydon Bois, Essex, CM16 7EY

✉ theydon@butlerandstag.com

www.butlerandstag.uk

IMPORTANT NOTICE - These particulars have been prepared in good faith and they are not intended to constitute part of an offer or contract. We have not performed a structural survey on this property and the services, appliances and specific fittings have not been tested. All photographs, measurements, floor plans and distances referred to are given as a guide and should not be relied upon.